

## Datasheet Traqc-650 Test Bench-Expert

- ✓ Full stack calibration test bench
- ✓ Plug and play
- ✓ Safe and easy operation
- ✓ Robust and complete
- ✓ Pneumatic and electrical test and calibration
- ✓ Ideal for E&I workshops



### Introduction

This expert test bench will enable efficient, safe and accurate calibration of your instruments and actuators in your workshop. A best-in-class pressure controller and a multi function process calibrator, make a perfect calibration test bench. Fitted with adjustable stabilized DC power supply and pressure supply panels all kind of functional test can be performed in a heartbeat.

### Applications

- Pressure / electrical calibration
- Actuator testing
- General purpose testing

### Used in

- Instrument workshops
- Factory maintenance
- And many more



### About Tradinco Instruments

Tradinco Instruments provides the best solution for every test, measurement and calibration challenge in the industry.

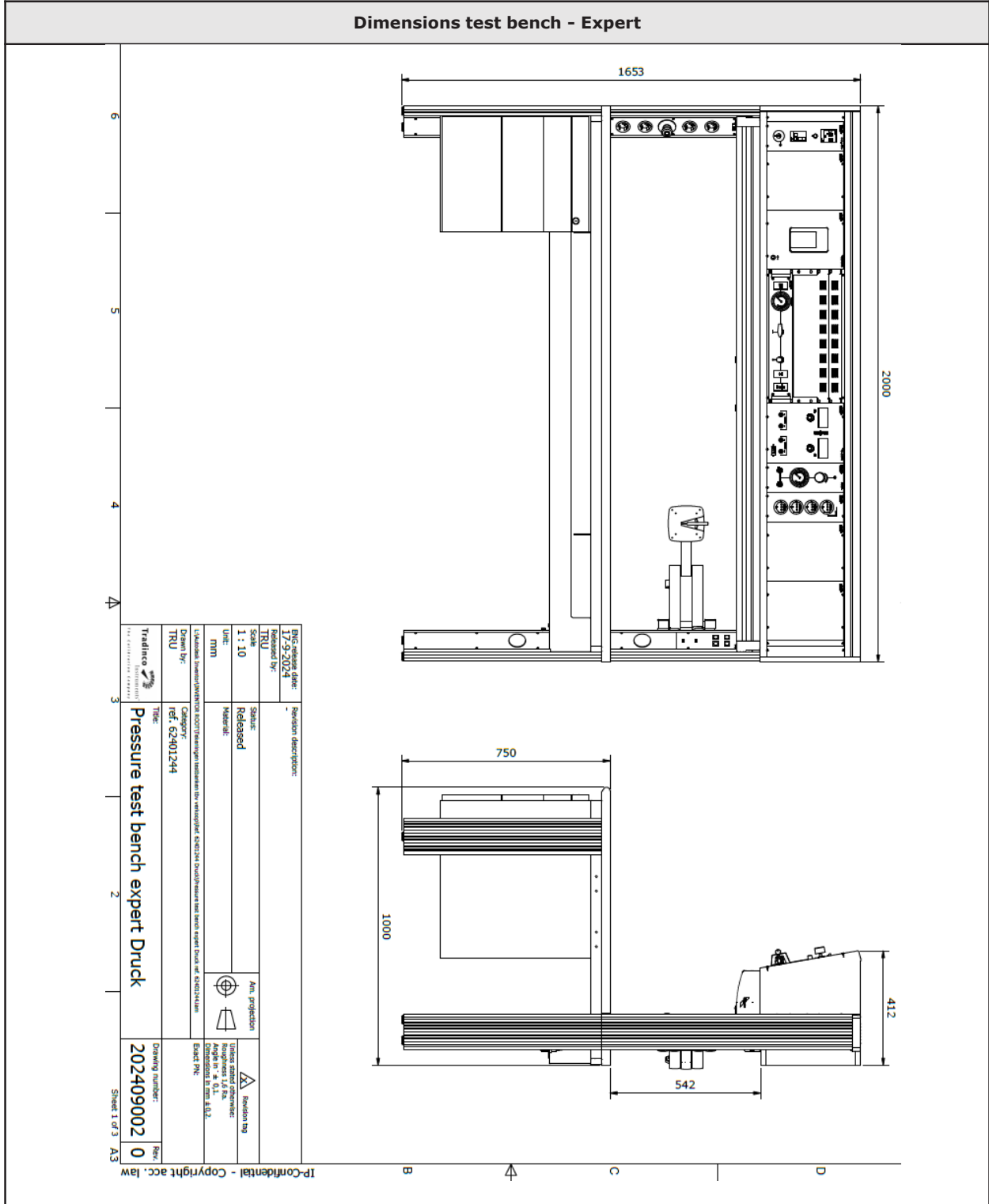
Our brand promises:

- ✓ Skilled specialists
- ✓ Customer focus
- ✓ Broad portfolio
- ✓ Long-term partnership

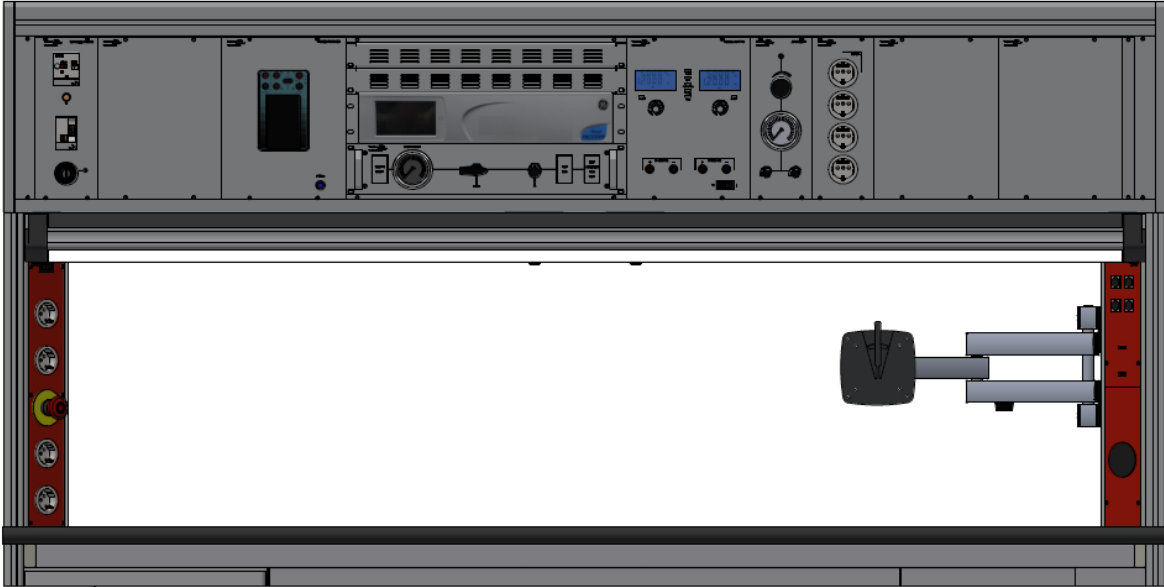




## Specifications

<b>Connections and interfaces</b>	
Pressure supply	1/8" NPT (female) connector located on rear connection panel. Supply pressure can be any positive pressure between 0 and 400 bar. Supply pressure must slightly exceed the measurement range of the installed pressure controller to enable use of the full control range. Built-in pressure reducers will ensure proper operation of your PACE controller without risk to over pressurize. For measurement ranges below 1 bar, the reducer will be a bleeding type. Please indicate your specific supply pressure range upon order) A pressure bottle holder or booster station can be added as optional items.
Vacuum	Vacuum supply can be any pressure below ambient. An integrated vacuum-pump is optional.
Media (pressure connections)	Clean dry air or nitrogen.
Power supply	230 V AC @ 50 Hz to 60 Hz 16A Max power output. Input via Schuko by default, other country standard connectors available: see order instructions
Mechanical gauge	The mechanical pressure gauge indicates supply pressure. System pressure can be seen even when the testbench is switched off.
Data connection	Data-ports are easily accessible. Both instruments can be connected to a PC via a single USB port - USB (standard B)
Electric test connections	- 4mm safety plugs and thermocouple connector (see DPI620Genii datasheet)
Pressure test connection	- 1/8" NPT (female) connector located on rear connection panel.
Pressure Connections	We can install customer specific connectors on request. Common types are: Minimes, Swagelok QC-4 or VCR
<b>PACE 5000 Pressure Controllers</b>	
	PACE pressure controllers offer best in class pressure control functionality for any application. The mobile testbench is suitable for use with any PACE 5000 Pressure controller with a CM0, CM1, CM2 or CM3 pressure control module, with or without barometric reference option installed. See PACE datasheet for more details.
Measurement ranges CM0,1&2 (gauge pressure ref)	25, 70, 200, 350, 700 mbar 1, 2, 3.5, 7, 10, 20, 35, 70, 100, 135, 172, 210 bar All gauge versions available with negative calibration as standard. For absolute pressure ranges select any range of 1 bar and above and add barometric option.
Measurement ranges CM0,1&2 (absolute pressure ref)	2, 3.5, 8, 11, 21, 36, 71, 101, 136, 173 and 211 bar 1,2.5,7,10,20,35 and 70, 100, 135, 172, 210 bar pseudo gauge (only in combination with barometric option)
<b>DPI620 Genii multifunction calibrator</b>	
Available models	All models can be installed except IS (intrinsically safe) versions. Available functionality will depend on the selected model. Please indicate exact model upon order.
Measure	DC Voltage, AC Voltage (note 1), Current, Resistance (Note 2), Frequency (note 1)
Source	DC Voltage (note 1), Current, Resistance (note 1), Frequency (note 1)
Specifications	For detailed specifications refer to DPI 620 Genii datasheet
notes	Note1: not applicable to DPI620G-B, DPI620G-H Note2: Resistance (4 wire) not applicable to DPI620G-B, DPI620G-H The DPI620G-B/H models support electrical single channel function only

## Specifications



## Specifications

Impression of test bench		
		
Optional Items		
Gas Booster	<ul style="list-style-type: none"> <li>- TA19010303 Booster unit, mounted on test bench cart compression ratio 1:4, max supply pressure 10 bar, max generated pressure 40 bar (can be limited to lower pressure when needed)</li> </ul>	
Vacuum pump	<ul style="list-style-type: none"> <li>- MS10024956 Dry-scroll pump, Ultimate vacuum (max) 0.3 mbar(abs), Flow Rate (max) 50 l/min, Oil Free</li> </ul>	
	<ul style="list-style-type: none"> <li>- TA800020 Membrane pump, Ultimate vacuum (max) 160 mbar(abs), Flow Rate (max) 5.5 l/min, Oil Free</li> </ul>	
Air compressor	<ul style="list-style-type: none"> <li>- Low pressure compressor, Max Pressure 16 bar displacement (50 Hz) 50 l/min, FAD @ 16 bar Pressure (50 Hz) 32 l/min), Tank Size 4 liters, Noise Level 45 dB, Max. current (230V, 50 &amp; 60 Hz)) 2.9A</li> </ul>	

## Order information

How to order		
Fill out all the fields below to order.		
Traqx-650 testbench - expert	Stationary testbench containing a DPI620Genii and PACE 5000, storage drawers, worktable lighting, stabilized power supply and all accessories needed to connect to Pressure and power supply.	<input type="checkbox"/>
Power supply connection	Mains lead -UK plug (type-G)	<input type="checkbox"/>
	Mains lead -Japan plug (type-B)	<input type="checkbox"/>
	Mains lead -EU plug (type-F & type-E)	<input type="checkbox"/>
	Mains lead -USA plug (type-B)	<input type="checkbox"/>
	Mains lead -South Africa/India plug (type-D)	<input type="checkbox"/>
	Mains lead -China Australia/New Zealand plug (type-I)	<input type="checkbox"/>
Supply pressure	State available supply pressure (range)	
CM module	CM0	<input type="checkbox"/>
	CM0B	<input type="checkbox"/>
	CM1	<input type="checkbox"/>
	CM1B	<input type="checkbox"/>
	CM2	<input type="checkbox"/>
	CM2B	<input type="checkbox"/>
	CM3	<input type="checkbox"/>
	CM3B	<input type="checkbox"/>
CM Module range	Indicate pressure range of CM module	
Software options for PACE	Leak Test	<input type="checkbox"/>
	Analogue Output	<input type="checkbox"/>
	Volt Free Contacts	<input type="checkbox"/>
	Test Program	<input type="checkbox"/>
	Burst Test	<input type="checkbox"/>
	Switch Test	<input type="checkbox"/>
DPI620 (select 1)	DPI620G-L Calibrator Lite	<input type="checkbox"/>
	DPI620G Calibrator with HART	<input type="checkbox"/>
	DPI620G-PB Calibrator HART & Profibus	<input type="checkbox"/>
	DPI620G-FF Calibrator HART & Fieldbus	<input type="checkbox"/>
	DPI620G-FFPB HART Fieldbus & Profibus	<input type="checkbox"/>
	DPI620G-B Basic Calibrator	<input type="checkbox"/>
	DPI620G-H Basic Calibrator with HART	<input type="checkbox"/>
Optional items (select only if needed)		
Vacuum Pumps (select 1 or none)	- MS10024956 Dry-scroll pump, Ultimate vacuum (max) 0.3 mbar(abs), Flow Rate (max) 50 l/min, Oil Free	<input type="checkbox"/>
	- TA800020 Membrane pump, Ultimate vacuum (max) 160 mbar(abs), Flow Rate (max) 5.5 l/min, Oil Free	<input type="checkbox"/>
Booster unit (select 1 or none)	- TA19010303 Booster unit, mounted on test bench cart compression ratio 1:4, max supply pressure 10 bar, max generated pressure 40 bar (can be limited to lower pressure when needed)	<input type="checkbox"/>
Air Compressor	- DH940637 Low pressure compressor, Max Pressure 16 bar Displacement (50 Hz) 50 l/min, FAD @ 16 bar Pressure (50 Hz) 32 l/min, Tank Size 4 litres, Noise Level 45 dB, Max. current (230V, 50 & 60 Hz) 2.9A	<input type="checkbox"/>
Additional comments or remarks		