

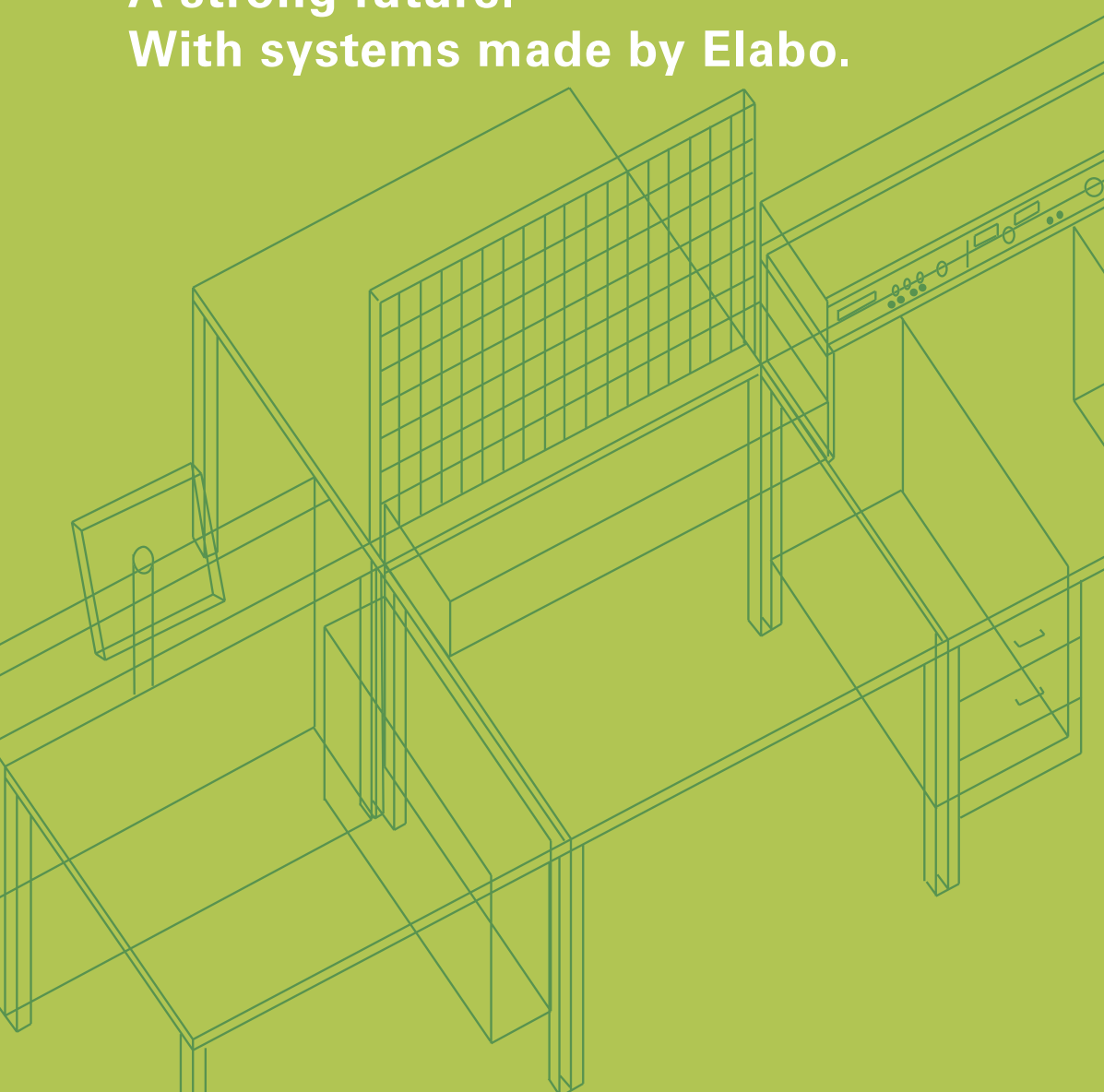
Elabo. EducationSystems



euromicron group



A strong future.
With systems made by Elabo.



ergonomic ■ functional ■ modular

5 important reasons for choosing complete solutions by Elabo



1

The entire range of equipment

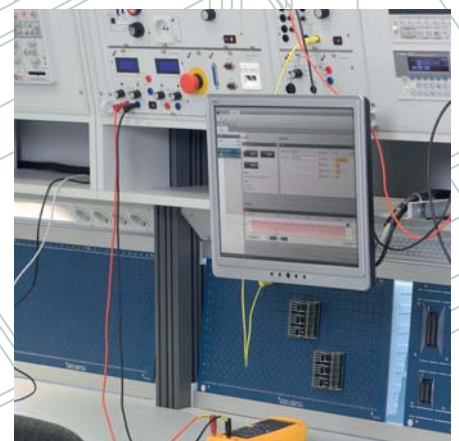
Elabo provides training devices which are expedient for the equipment of professional, function training rooms and for the realization of modern, successful teaching in electrical vocations. The Elabo services, too, set standards. For example, should calibration be required or should a device prove faulty, Elabo provides a free collect and return service and, if required, provides a device on loan which is fully compatible with the client's electronics systems.



2

Always at the cutting edge

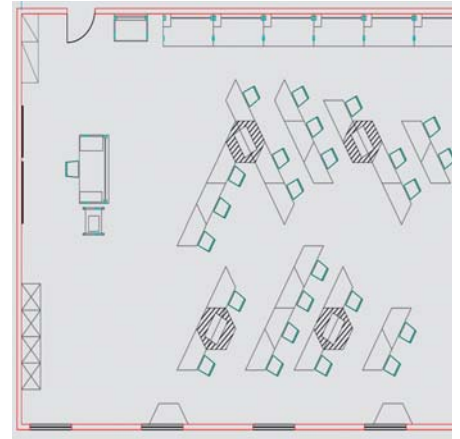
Elabo is quick to respond to the latest technological and pedagogical developments with solutions - hardware and software, teaching material and services - for training in electrical vocations. Elabo is also able to provide fittings appropriate for training in new vocations right away. All components fit seamlessly into one another; the software and teaching material, too, are perfectly aligned to one another.



3

Outstanding handling

Systems made by Elabo are designed in modular form and can be adapted to changes in training concepts at any time. They make it easy for teachers to concentrate on their core task - teaching. All operating functions are mainly self-explanatory or quick and easy to learn. Use of the devices and furniture is easy to grasp; adaptations for new projects are uncomplicated and quickly carried out. Not only that, but the devices and furniture are compact and space-saving. They can be dismantled, easily transported and stored in a space-saving manner.



4

Optimum learning environment

Trainees, schoolchildren and students alike love the training stations by Elabo. They have all the devices required for practical exercises, usually within reach. The intelligent space-saving concept allows for generously-sized work surfaces. The devices are stored as in a cockpit, interlocked in racks. The groundbreaking cable management system ensures that cables do not get in the way when people are handling test objects. The well thought-out Elabo concept convinces users with its technical-aesthetical forms and colours, which are just like those to be found in top industrial companies. The highly professional standard gives pupils a preliminary feeling of being in their vocational future and palpably motivates them.



5

Convincingly competent in practical work

Using education systems by Elabo, teachers can create advanced and professionally substantial lessons. These lessons are perfectly related to future practice. The modern teaching material strengthens teachers' authority as the mediators of high quality knowledge. They can update their knowledge on the latest technology and changes in standards at Elabo seminars. Using Elabo software and network equipment control functions, they are able to assert themselves firmly and confidently against troublemakers. They are able to provide a convincing basis for the marks given through (automatically generated) documentation of the performances of trainees, schoolchildren and students in practical lessons.



Specialist diversity



■ Elabo provides a wide range of products for training and apprenticeships in the specialist fields of electronics and electrotechnology as well as related fields. These include desk systems and desktop racks, inserts with power supply systems and measuring and testing technology, mobile experimentation elements for didactic use, storage furniture and comprehensive teaching material. If required, the teaching material can incorporate the curricula for the respective training institution.

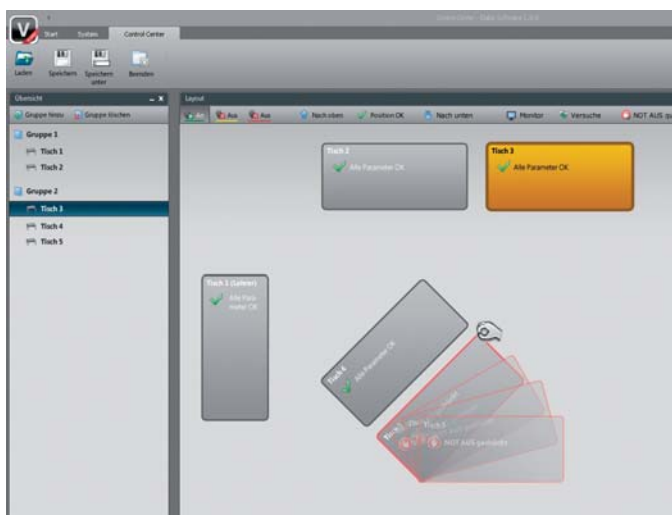


■ Desks form the basic modules for training stations made by Elabo. They act as stable supports for base cabinets and racks of very different types, and can be linked into diverse arrangements. Electronic devices are integrated interlocked in racks, cables are stored safely and securely fixed directly to desks or to vertical profiles. Elabo uses two program series to cater for different requirements. The EcoTecSP convinces with its sturdy and functional steel tube constructions and provides an extremely attractive entry-level price. InForm, on the other hand, provides extreme flexibility, unusual sturdiness and the so-called "Open Space System", using which subsequent changes can be carried out very easily.

■ Electrical instruments can be integrated as modules into racks using inserts made by Elabo. The range of products extends from simple insert plates right up to inserts with remote controllable supply and meter systems. It comprises all devices expedient for training in very different electrical vocations. In this way highly compact electrical learning stations are created with maximum efficiency.



■ Networked devices and systems are now used in modern development laboratories. Automated series of measurements and circuit analyses combined with permanent documentation make it easy to monitor the function of components and circuits. Using the Elabo network technology and software, you can now pave the way for your pupils directly into such departments and equip them for the requirements there.

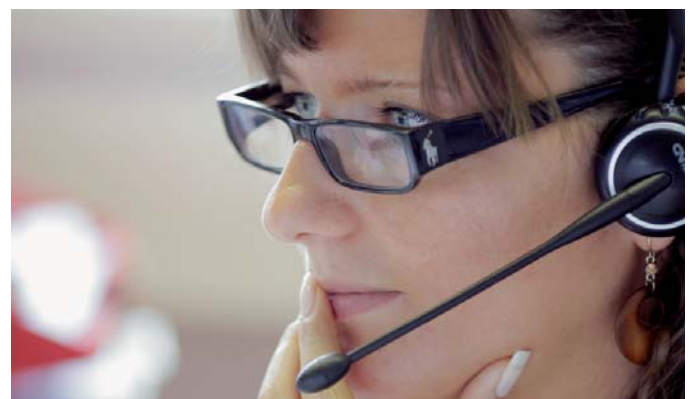


■ In addition, you will receive an expedient and well thought-out tool for the preparation of your lessons. For example, you can prepare lessons using test schedules, simulate faulty signals and thereby initiate a pupil in cause analyses, or transmit a central demonstration to all monitors. Furthermore, you can make your classroom look like a real vocational workplace and control it professionally. You can obtain a perfect overview of the individual desks, gain access to the screens of each individual pupil's station and can if required also intervene via remote control at any time.

Hotline

**0800 / 35 22 64 6 –
The best advice from the start.**

■ The ideal way to obtain a training laboratory which accords with your requirements: from planning and realisation through user training to service across the entire product lifecycle; whenever the laboratory presents you with important tasks, our experts are there for you.



References

Training centres:

Knorr Bremse Systeme
für Nutzfahrzeuge GmbH **ALDERSBACH**

Maschinenbauschule **ANSBACH**

OSZ Energietechnik **BERLIN**

A & D analoges und digitales
Schulungszentrum GmbH **BERLIN**

Berliner Stadtreinigungsbetriebe
Ausbildungszentrum **BERLIN**

Hahn-Meitner-Institut Schülerlabor **BERLIN**

OSZ Versorgungstechnik
Max-Taut-Schule **BERLIN**

Berufsbildende Schulen II
Axel-Bruns-Schule **CELLE**

Gewerbliche Berufsschule **CRAILSHEIM**

Staatl. Berufsschule 1 **DEGGENDORF**

Berufsb. Schule des Kreises **DETMOLD** /
Felix Fechenbach Kolleg

Staatl. Berufs-/Fachoberschule **ERLANGEN**

Staatl. Berufsschulen **FREISING**,
LINDAU, **INGOLSTADT**

Eduard-Spranger-Schule **HAMM**

Wilhelm-Maybach-Schule **HEILBRONN**

Staatl. Berufsschulzentrum **ILMENAU**

Meisterschule für Handwerker
KAISERSLAUTERN

Werner-von-Siemens-Schule FB
Elektrotechnik **KÖLN**

Berufliches Schulzentrum 7
Elektrotechnik **LEIPZIG**

Städt. Berufsschule **NÜRNBERG**

Hochtaunusschule HTS **OBERURSEL**

Berufliches Schulzentrum für Technik **RIESA**

Berufsbildende Schulen
FREDENBERG SALZGITTER

Berufsbildungs- und
Technologiezentrum **STRAUBING**

Staatl. Feintechnikerschule
VILLINGEN-SCHWENNINGEN

Friedrich-Schriedel-Schule **WANGEN**

Staatl. Fachoberschule und
Berufsoberschule **WEILHEIM I. OB**

Staatl. Gewerbliche Technische
Berufsbildende Schule **WEIMAR**

Berufsschulzentrum **ZWICKAU**





Technical colleges:

AMBERG/WEIDEN, ANSBACH, AUGSBURG, BERLIN, BIBERACH, BRANDENBURG, DEGGENDORF, ELMSHORN, EMDEN, ESSLINGEN, FLENSBURG, FRANKFURT, HEIDE, HEILBRONN, INGOLSTADT, KARLSRUHE, KIEL, LAUSITZ, LÜBECK, MITTWEIDA, MÜNCHEN, NIEDERRHEIN, NORDHAUSEN, REGENSBURG, ST. AUGUSTIN, SCHMALKALDEN, STRALSUND, ULM, WEDEL, WIESBADEN, WOLFENBÜTTEL, WÜRZBURG, ZITTAU

Higher technical educational institutions:

BRAUNAU ÖSTERREICH, KLAGENFURT ÖSTERREICH

Technical colleges/Universities:

RWTH AACHEN, LEIPZIG, SAARBRÜCKEN, WISMAR

Technical colleges/Universities:

BERLIN, CHEMNITZ, CLAUSTHAL-ZELLERFELD, DARMSTADT, DRESDEN, GRAZ ÖSTERREICH, ILMENAU, MÜNCHEN

Technology Colleges:

ABBA SAUDI ARABIEN, AL HOFUF SAUDI ARABIEN

Universities:

AUGSBURG, BREMEN, BRESCIA ITALIEN, DORTMUND, ERLANGEN, FREIBURG, FRANKFURT, GIESSEN, GÖTTINGEN, HALLE, HAMBURG, HEIDELBERG, KARLSRUHE, KASSEL, MAGDEBURG, MAINZ, MANNHEIM, NAVARRA SPANIEN, ROSTOCK, STUTTGART, TRIER, TÜBINGEN, ZWICKAU

Staatliche Fachoberschule ERLANGEN

Gesamthochschule KASSEL

Rheinhold-Würth-Hochschule KÜNZELSAU



Elabo GmbH
euromicron Group
Roßfelder Straße 56
D-74564 Crailsheim
Tel. (+49)7951/307-0
Fax (+49)7951/307-66
info@elabo.de
www.elabo.de

The Elabo GmbH.
Highly flexible solutions.
Efficient and economic.

Elabo is the partner for companies and institutions which produce or install electrical and electronics products and components, or use them for quality assurance. Elabo can develop modular and customer-tailored, highly-flexible and extremely economic systems especially for you.

The range of services comprises the design and fitting of professional rooms - for example electrical laboratories - as well as individual engineering and the construction of complex quality assurance facilities.

Elabo's efficiency is based on comprehensive know-how in electrotechnology and electronics, in mechanics and ergonomics, in process management and in logistics as well as in well-founded knowledge of occupational protection regulations and technical standards. Elabo is a hardware-manufacturing knowledge and service provider which focuses its services on the specific requirements of the respective customer - and which mainly produces inhouse. Elabo has the capabilities and the production facilities for high quality realisation of the concepts.

Elabo, founded in 1972 has approximately 150 employees and is the European leader in its market.

Elabo EducationSystems

Desks, racks with power supply systems and also measurement and testing equipment, cabinets and chairs: Elabo offers complete specialist rooms for electrotechnology, mechatronics, IT and related fields.



Elabo LaboratorySystems

Elabo is used not only in research and development but also in prototype construction. From pneumatic measuring equipment and ESD desks to software for archiving measurement results.



Elabo AssemblySystems

Profile system with extremely sturdy stands, cross-beams and roller conveyors: Elabo produces work stations for manual and partially automated production. Also available with integrated testing systems.



Elabo ProcessControlSystems

In computer centres, safety control centres or in energy supply - whether you require panels with operating elements or large-scale display systems, Elabo plans and implements rooms for process monitoring.



Elabo TestSystems

Measuring. Testing. Automation. Elabo designs customised testing situations for its customers. From high-voltage testing devices to highly sophisticated testing systems with interchangeable adapters.



Elabo WorkshopSystems

From the workbench to the documentation testing station: Elabo designs the tasks required for modern maintenance, from the simple desk to software for storing measurement values.

