

Operation Instruction

Loop Calibrator

EC mAV



1.	Safety Information	3
2.	Overview of the functions	4
3.	Instrument Panel Layout and Functions	6
4.	Replacing the Battery	7
5.	Power-On/Off of Calibrator	7
	4.1 Power key operation.....	7
	4.2 Automatic power-off.....	7
6.	Output / Generation / Simulation	8
	5.1 Output DC current as mA or %	8
	5.2 Output DC current as fixed steps.....	9
	5.3 Output DC current as Zero Point & Full Scale.....	9
	5.4 Output DC current as auto-ramp.....	9
	5.5 Simulating transmitter output (XMT)	10
7.	Input / Measurement	11
	6.1 Measuring DC current	11
	6.2 Measuring DC Voltage.....	12
	6.3 Providing 24V Power Supply For Measuring Loop Current.....	12
	6.4 Measuring Switching contact Status	13
8.	Performance Capabilities	13
	7.1 Output Performance Capabilities	13
	7.2 Input Performance Capabilities.....	14
9.	General Specifications.....	14
10.	Points for Attention to Use of Operation Instruction	15

1. Safety Information

To ensure the safety operation, the following signs are used only as specified in this operation instruction.

Warning

A warning shows that if the operation does not comply with the following correct instruction it is possible to bring hazards to the user or cause damage to the calibrator in use. The warning also points out how to avoid the accidents.

! Caution

A caution shows that if the operation does not comply with the following correct instruction, it is possible to cause damage to the calibrator in use. The caution also points out how to avoid maloperation.

Note

A note serves as a sign to remind the user that he must understand the correct operation of the calibrator and its characteristics.

To prevent the user and the calibrator from any electric shock and other hazards, it is necessary to observe the following regulation:

Warning

- It is not allowed to operate the calibrator at the working field where there exists flammable gas or explosive gas or vapor. It is very dangerous to operate the calibrator in such a surrounding.
- Never apply more than 30V between any two terminals, or between any terminal and earth ground.

! Caution

- **Disassembly:** No one is allowed to remove the split case (top & bottom) of the calibrator except professionals.
- **Cleaning:** Periodically wipe the case with a damp cloth and detergent; do not use any corrosive solvents.
- **In use:** The calibrator can't perform both input and output simultaneously.
No direct connection can be made between both input and output.

Note

- To keep the calibrator in a designed accuracy, it needs warming up 5 minutes before it is put into operation.
- If any user requires a higher accuracy of the calibrator, he or she is requested to make contact with the manufacturer or our product distributors.

2. Overview of the functions

The EC mAV is a loop calibrator. The following functions are available

- generation of DC current in the range from -25% (0 mA)...112.5% (22 mA)

-25%	0 mA
0%	4 mA
25%	8 mA
50%	12 mA
75%	16 mA
100%	20 mA
112.5%	22 mA
- generation of DC current in 25% (4mA) steps manual

0%	4 mA
25%	8 mA
50%	12 mA
75%	16 mA
100%	20 mA
- generation of DC current between 0% (4 mA) and 100% (20 mA)

0%	4 mA
100%	20 mA
- generation of DC current in the range from 0% (4 mA)...100% (20 mA) as different ramps
 - = continuous ramp with ramptime app. 60 sec.
 - = continuous ramp with ramptime app. 30 sec.
- generation of DC current in 25% (4mA) steps automatic

0%	4 mA
25%	8 mA
50%	12 mA
75%	16 mA
100%	20 mA

 - = continuous duration time on each step app. 5 sec.
- simulation of a DC current transmitter function with external loop supply

- measuring of DC current in the range from -31,25% (-1 mA)...112.5% (22 mA)

-31.25%	-1 mA
-25%	0 mA
0%	4 mA
25%	8 mA
50%	12 mA
75%	16 mA
100%	20 mA
112.5%	22 mA

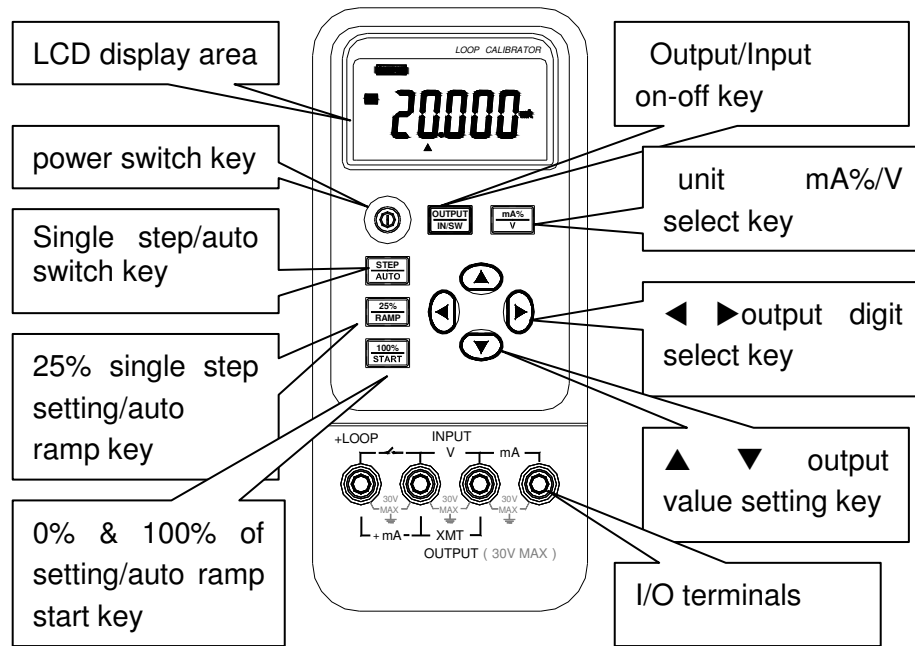
- measuring of DC voltage in the range from -0.2 V...28 V

- measuring of DC current in the range from -31,25% (-1 mA)...112.5% (22 mA) with internal loop supply (24 VDC)

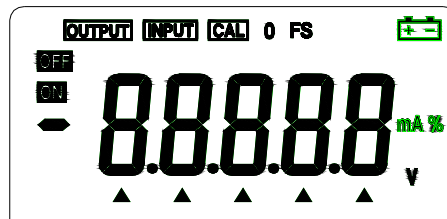
-31.25%	-1 mA
-25%	0 mA
0%	4 mA
25%	8 mA
50%	12 mA
75%	16 mA
100%	20 mA
112.5%	22 mA

- measuring switching contact (OPEN / CLOSE)

3. Instrument Layout and Functions



Explanation of LCD Display Area

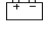


- a) **OUTPUT** Press the key (OUTPUT / IN / SW) when the symbol **OUTPUT** appears. It denotes that the calibrator is in a state of output.
- b) **INPUT** Press the key (OUTPUT / IN / SW) when the symbol **INPUT** appears. It denotes that the calibrator is in a state of input.
- c) **CAL** When the symbol **CAL** appears, it denotes that the calibrator is in a state of calibration.
- d) **O FS** When the symbol 'O' or 'FS' appears during the calibration, it denotes that the zero point or the full scale point is being calibrated.
- e) When this symbol appears, it denotes that the battery is nearly used up and needs replacing.
- f) **▲** When this symbol appears, it denotes that the output digits need setting.
- g) **V. mA. %** These symbols denotes the engineering units of input or output values.
- h) **ON**, **OFF** These symbols denotes the turn-on or turn-off state of any input / output signal.

4. Replacing the Battery

Warning

- The Power supply of the calibrator must be shut down and the test leads need removing prior to replacing the battery.

When the symbol  appears in the display, it denotes that the battery is nearly used up and needs replacing in the following steps:

- 1) Turn off the power switch of the calibrator and then remove the test leads.
- 2) Remove the holster from the calibrator. Open the battery cover at the back of the calibrator by releasing the lock in the indicated direction.
- 3) Replace the used-up battery with a new one. Put the battery cover back and lock it in the indicated direction.
- 4) Put the holster back onto the calibrator.

5. Power-On/Off of Calibrator

4.1 Power key operation

Press the **[POWER]** key to turn on the power supply of the calibrator.

Then press it again to hold it in one second and the power will be off. When the power is turned on, the calibrator starts to make self-diagnosis internally and the full screen is in display. After this, appropriate operation should be carried out.

Note

- Power on: To ensure the correct operation of the calibrator with power on, it is good practice to turn off the power pausing 5 seconds and then restart the calibrator.

4.2 Automatic power-off

By the shipping time, the calibrator is set in the factory like this: In case there is no operation applied to the calibrator within 10 minutes after power-on, it will cut off the power automatically. However, users can decide whether they want to use the function of the automatic power off or not. The setting can be done by themselves.

The following operation makes it possible for the calibrator to change its automatic power-off function.

- 1) Switch off the power supply of the calibrator.
- 2) Press the **[POWER]** key and the calibrator starts to make self-diagnosis. During this procedure push the **[mA%/V]** key so that the calibrator can get into a maintenance state. The display indicates the symbol 'AP-XX'.
- 3) Press the key **[▼]** when the symbol 'AP-OF' appears, which denotes that there is no automatic power-off function available for use with the calibrator. When the symbol 'AP-ON' appears in the display, the calibrator recovers its automatic power-off function.
- 4) Switch off the power supply again to exit the state of the maintenance.

6. Output / Generation / Simulation

The calibrator generates the DC current from its appropriate output terminal set by the user or simulating a transmitter.

Caution

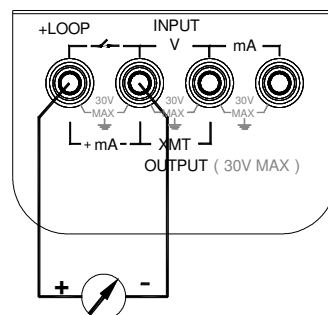
- Do not apply voltage to the output terminal during the operation. If any improper voltage is applied to the output terminal, it will cause damage to the internal circuit.

Output Operation Procedure

Function Operation	% Operation	Display	Setting Range
DCA 20 mA	20 mA ↓ %	00.000 mA -025.00 mA %	00.000 to 22.000 mA -025.00 to 112.50 mA %

5.1 Output DC current as mA or %

- 1) Insert one end of the test leads to the +mA -output jack of the calibrator and connect the other end with the input of the user's instrument as shown in the following diagram:



- 2) Press the key **[OUTPUT/IN/SW]** until the symbol **OUTPUT** appears in the display. It denotes that the calibrator is in an output state.
- 3) Press the key **[mA% / V]** to select the output to be set in mA or %, and then the unit mA or mA% appears, in which 0% denotes 4mA and 100% denotes 20mA.
- 4) Press the key **[◀] / [▶]** to select the set digits of the output.
- 5) Press the key **[▲] / [▼]** to change the value of the set digits. The value can do carry or number decrement automatically. Hold the pressed key in one second and the numerical value will keep varying.

5.2 Output DC current as fixed steps

- 1) The connection is the same as that of the current output.
- 2) When the key **{OUTPUT/IN/SW}** is pressed, the **OUTPUT** appears in the display, it denotes the calibrator is in an output state.
- 3) Press the key **{25%/RAMP}** and the symbol 'r' will appear.
- 4) Press the key **{mA%/V}** to select the output to be set in mA or %, and then the unit 'mA' or 'mA%' appears.
- 5) Press the key **{▲} / {▼}** to change the output in a value of 25%, in which 0 % denotes 4 mA and 100 % denotes 20 mA.
- 6) Press the key **{25%/RAMP}** again so as to exit the step current output.

5.3 Output DC current as Zero Point & Full Scale

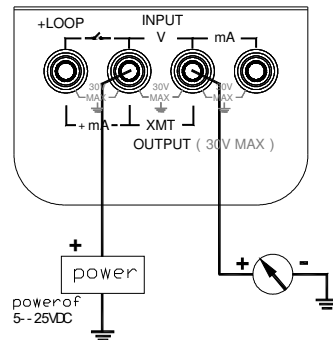
- 1) The connection is the same as that of the current output.
- 2) Press the key **{OUTPUT/IN/SW}** when the symbol **OUTPUT** appears in the display, denotes that calibrator is in an output state.
- 3) Press the key **{100%/START}** and the symbols 'r', '0', 'FS' will appear in the display.
- 4) Press the key **{▲}** to be set to 100% and the current output will be 20mA. Press the key **{▼}** to be set to 0 % and the current output will be 4 mA.
- 5) Press the key **{100%/START}** again so as to exit the current output of 0% and 100%.

5.4 Output DC current as auto-ramp

- 1) The electric connection is the same as that of the current output.
- 2) When the key **{OUTPUT/IN/SW}** is pressed, the **OUTPUT** appears in the display. It denotes the calibrator in an output state.
- 3) When the key **{STEP/AUTO}** is pressed, the symbols **OUTPUT**, **OFF**, 'L' along with '4mA' appear in the display. If so, it denotes that the calibrator is getting into the mode of RAMP.
- 4) Press the key **{25%/RAMP}** again so as to change the type of the output ramp, which finds itself in the upper right of the display. The type appears with 'L', 'H', 'r' in proper order. These symbols denote a low speed ramp, a high speed ramp and a auto-stair step ramp respectively. The former is set to a cycle up to 60S and the latter is up to 30S, while the auto-stair step ramp pauses 5 seconds at each step.
- 5) Press the key **{100%/START}** to start the output of the set waveform when the symbol **ON** appears. Now press the key **{100%/START}** again and the output will pause on a current value and the symbol **OFF** will appear. Then press the same key again and the output will continue to do the set steps from the pause value. When the symbol **OFF** appears, press any one of the keys **{◀}**, **{▶}**, **{▲}**, **{▼}** so as to bring the output back to the 0%. Then the value of 4mA appears in the display.

5.5 Simulating Transmitter output (XMT)

- 1) Insert one end of the test lead to the 'XMT' output jack of the calibrator and connect the other end with the input terminal of the user's instrument as shown in the following diagram:



- 2) The key-operation is the same as that of the current output in subsection 5.1.

Note

- Range of power supply: 5 to 25 VDC.
- During the operation of the current output, try your best to use the external 24 VDC power supply in a mode of connecting a transmitter, thus being able to prolong the working life of the battery.

7. Input / Measurement

Warning

- During the operation, never apply more than 30V between any two terminals, or between any terminal and earth ground. Any voltage more than 30V will not only do damage to the calibrator, but also lead to possible personal injury.

Caution

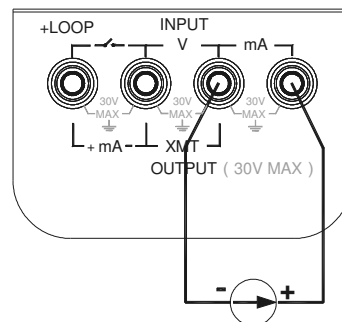
- During the operation, do not apply a voltage or current exceeding the measuring range to the input terminal, which will cause possible damage to the calibrator.
- During the operation, switch off the power supply of the instrument to be tested before connecting to the calibrator. The electric connection with such an instrument without switching off its power supply will cause possible damage to the calibrator.

Input operation procedure

Function Operation	% Operation	Display	Measuring Range
DCA 20 mA ↓	20 mA ↓	00.000 mA	-1.000 to 22.000 mA
DCV 28 V	%	-025.00 mA % 0.000 V	-031.25 to 112.50 mA% -0.2000 to 28.000V

6.1 Measuring DC current

- 1) Insert one end of the test lead into the mA jack of the calibrator input terminal and connect the other end to the output of the user's instrument as shown in the following diagram:

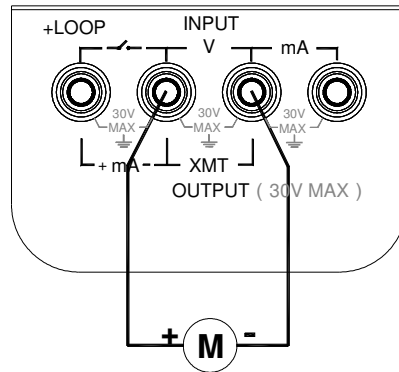


- 2) When the key **(OUTPUT/ IN/SW)** is pressed, the symbol **INPUT** appears in the display. It denotes that the calibrator is in an input state.
- 3) Press the key **(mA%/V)** to select the input to be set in mA or %. Then the unit 'mA' or 'mA%' appears, in which the value of 0% denotes 4 mA and the value of 100% denotes 20 mA.
- 4) The calibrator starts measurements, and then the symbol **ON** appears in the display followed by the result of measurements.

The refreshing rate of displaying the measurement is about twice per second. If the measured value exceeds the measuring range, the display will indicate the symbol '-OL-'.

6.2 Measuring DC Voltage

- 1) Insert one end of the test lead into the V input jack of the calibrator and connect the other end with the output of the user's instrument as show in the following diagram:

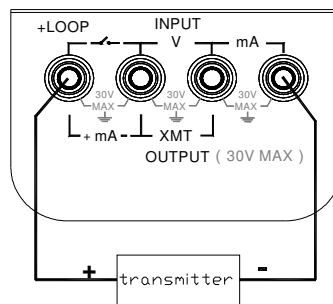


- 2) When the key **{OUTPUT / IN/SW}** is pressed, the display indicates the symbol **INPUT**. It denotes that the calibrator is in an input state.
- 3) Press the key **{mA%/V}** to select the V function when the unit 'V' appears in the display.
- 4) The calibrator starts measurements, and then the display indicates the symbol **ON** followed by the result of measurements.

The refreshing rate of the measurement display is about twice per second. If the measured value exceeds the measuring range, the display will indicate the symbol '-OL-' (overload).

6.3 Loop Supply for Measuring DC Current

- 1) Insert the test lead into the +LOOP & mA input jacks of the calibrator as shown in the following diagram:

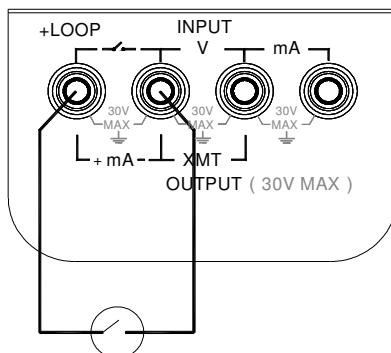


- 2) When the key **{OUTPUT/ IN/SW}** is pressed, the symbol **INPUT** appears in the display. It denotes that the calibrator is in an input state.
- 3) Press the key **{mA%/V}** to select the input to be set in mA or %. Then the unit 'mA' or 'mA%' appears, in which the value of 0% denotes 4 mA and the value of 100% denotes 20 mA.
- 4) The calibrator starts measurements, and then the symbol **ON** appears in the display followed by the result of measurements.

The refreshing rate of the measurement display is about twice per second. If the measured value exceeds the measuring range, the display will indicate the symbol '-OL-' (overload).

6.4 Measuring Switching contact Status

- 1) Insert one end of the test lead into the switching contact measuring jack of the calibrator and connect the other end to the switching contact of the user's instrument as shown in the following diagram:



- 2) When the key [OUTPUT/IN/SW] is pressed, the display indicates the symbol 'INPUT' followed by the word 'CLOSE' or 'OPEN' according to the measured switching contact status.

When the switching resistance exceeds 15 kΩ, the contact is regarded as an OPEN status.

8. Performance Capabilities

7.1 Output Performance Capabilities

(applicable to temperature range from 18 °C to 28 °C, within one year after calibration)

Output	Range	Output Range	Resolution	Accuracy	Remark
Current	20 mA	0.000 to 22.000 mA	0.001 mA	±0.05% of set value ±4 μA	max.1 kΩ at 20 mA see note 1.
Simu. transmitter. (absorp. current)	-20 mA	0.000 to -22.000 mA	0.001 mA	±0.05% of set value ±4 μA	max.1 kΩ at 20 mA see note 2.
Loop power	24 V			±10%	max. output current up to 25 mA

7.2 Input Performance Capabilities

(applicable to temperature range from 18 °C to 28 °C, within one year after calibration)

Input	Range	Input Range	Resolution	Accuracy	Remark
Voltage	28 V	-0.200 to 28.000 V	1 mV	±0.02 % of rdg. ±2 mV	input resistance 2 MΩ
Current	20 mA	-1.000 to 22.000 mA	0.001 mA	±0.02 % of rdg. ±4 μA	input resistance 10 Ω
Loop current	20 mA	0.000 to 22.000 mA	0.001 mA	±0.02 % of rd. ±4 μA	providing 24 V loop power
Switching Contact	OPEN / CLOSE				see note 6

Notes:

1. When the battery voltage exceeds 6.8 V, the max. load is 1KΩ at 20mA. When its voltage is between 5.8V and 6.8V, the max. load is 700 Ω at 20 mA.
2. external power supply range 5 to 25VDC.
3. Temperature coefficient: ±0.005% of range per °C for the temperature ranges 5 °C to 18 °C and 28 °C to 40 °C.
4. Measuring rate at DC current function is 500 msec.
5. Measuring rate at DC voltage function is 500 msec.
6. When the switching resistance exceeds 15 kΩ, the contact is regarded as an OPEN status

9. General Specifications

- Power supply 9V battery
(ANSI/NEDA 1604A or IEC 6LR619V alkaline)
- Battery life about 20 hours under the condition of 10mA
- Max. permitted voltage 30V
(between any two terminals or between any terminal and earth ground)
- Operating temperature 0 °C to 50 °C
- Operating relative humidity ≤80% RH
- Storage temperature ≤-10 °C to 55 °C
- Relative humidity for storage ≤90% RH
- Size 200×100×40mm (with holster)
- Weight 550g (with holster)
- incl. accessories operation instruction
a set of CF-36 industrial test lead
(with alligator clips attached to probes)
- Option AC power-supply adapter(VCPS)
industrial test lead(CF-31-A with probe clips)
- Safety certified as compliant to IEC1010 provisions
(Safety standard issued by IEC)

10. Points for Attention to Use of Operation Instruction

- The present operation instruction is subject to change without notice.
- The content of the operation instruction is regarded as correct. Whenever any user finds its mistakes, omissions, etc., he is requested to contact the manufacturer.
- The present manufacturer is not liable for any accident and hazard arising from any maloperation.
- The functions described in this operation instruction should not be used as grounds to apply this product to a particular purpose.