

# L I G H T N I N G<sup>®</sup> STRANGLEHOLD BANDING

it's  
whatever  
you  
want  
it  
to  
be



# One of the fastest and most

Now you can make worm drive clips, clamps and fasteners to the exact size needed, to meet a wide variety of industrial or domestic applications. Use Stranglehold to fix, secure, join, clamp, clip, fasten and strap. Stranglehold comes in a choice of pack lengths. There are two widths, 11mm in economy-priced zinc-plated mild steel or durable, corrosion-resistant stainless steel to 304 AISI (EN 58 E) specification; and 7mm width in all stainless steel only.

Simply measure the length needed to do the job, cut to size, and assemble one of our range of screw housings.

No special tools are needed- just snips and screwdriver. Stranglehold makes life easier all round. For example, there's no need to disconnect hoses when removing or replacing Stranglehold. Just wrap the required length around the pipe. No more forcing clips over stubborn hoses! And Stranglehold can be used time and time again.

## SAVE MONEY

Low cost applications are almost infinite. Use Stranglehold for hose pipes, machine guards, road signs, dairy and farm equipment, dust bags, ventilation trunking, temporary jigs, cable looms, and packing.

## SAVE SPACE

Specify Stranglehold and you won't need to stock quantities of different diameter hose clips. Any size from 3/4" (20mm) in dia. or larger can be quickly cut and assembled from a single, handy dispenser, which will also fit neatly into a tool box.

## FASTENING SCREWS

Versatility is further increased with our range of fastening systems. These include slotted screw, Allen screw, combination hexagonal/slotted, an anti-vandal fitting to prevent tampering, and the new 'flip-lock' captive screw. This time-saving screw means that where bands have to be regularly unfastened for maintenance etc., you simply slacken the screw, flip it up on its pivot, and pull out the band. To replace, push the screw back down and re-tighten for positive, vibration proof locking.

## INDUSTRY

### WIDE APPLICATIONS

Heating,

Ventilating & Air Conditioning.

Water & Electrical Industry.

Building

Signage

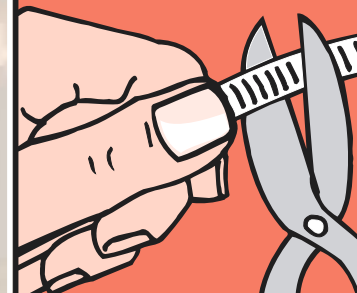
Marine

Mechanical

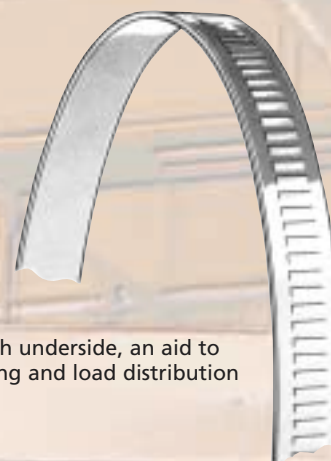
Agricultural

Forestry

Cut to length...



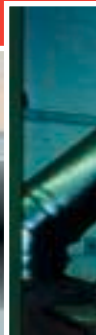
Measure the strip to required length, add approximately 2" 50mm and cut to size.



Smooth underside, an aid to tightening and load distribution

Stranglehold Screw Banding features a smooth underside which makes it an efficient, easy to use, banding system. Both the 11mm and 7mm systems are manufactured using a method that leaves the underside of the band free of undulations or holes, thus reducing drag on the surface below. This feature enables easy assembly, reduces damage to the components being clamped or fastened and ensures that the load is spread evenly.

Stranglehold provides the modern, flexible, cost effective answer to fastening requirements.

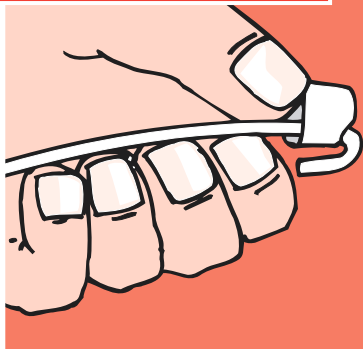


11mm  
o

# Most versatile systems available.

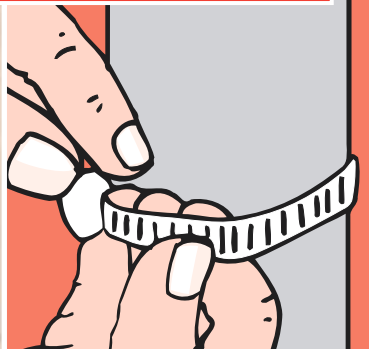


...add a housing...



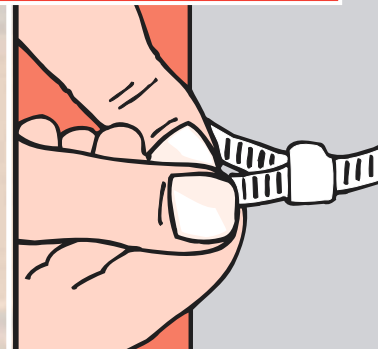
**Insert** one end of the band into the end of the housing and bend 1" (25mm) under.

...fit band, insert screw...



**Feed** the other end of the band around the objects to be clamped or fastened, and through the slot at the rear end of the housing.

...tighten screw.



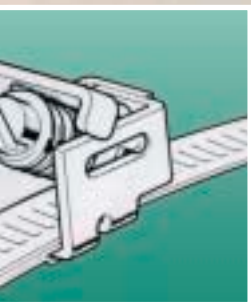
**Insert** the screw into the housing and tighten, using a screwdriver or Allen key.



**Slotted Screw**  
Zinc plated Mild Steel  
or Stainless Steel



**Allen Screw**  
11mm Zinc plated Mild Steel  
or Stainless Steel



**Captive Screw**  
Zinc plated Mild Steel  
or Stainless Steel



**Flip-Lock Screw**  
7mm all Stainless Steel

## Handy Pack

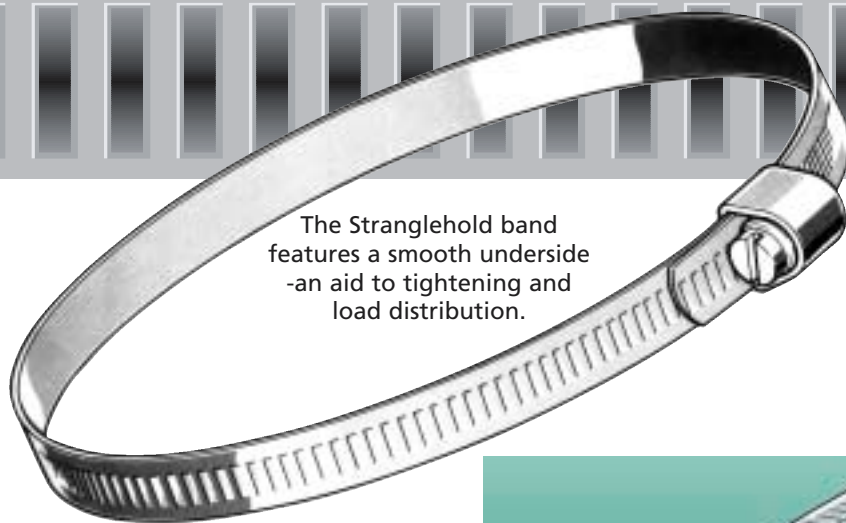
As the Handy Pack name suggests, for the less frequent user, the Stranglehold Screw banding System is also available in a Handy Pack form. The Handy Pack contains 10 metres of 11mm banding with 25 housings and screws in a separate container attached to the back of the box.

The Handy Pack is ideal for removing the need to stock a wide range of fixed diameter clips for emergencies, as any size from 20mm can be quickly cut and assembled from this single pack, which will also fit neatly into your toolbox.



# HOSE CLIPS

**A Versatile range of quality worm drive clips.**



The Stranglehold band features a smooth underside -an aid to tightening and load distribution.



**STANDARD HOSE CLIP**  
Size range 16-305mm Dia.

## Technical Data

### MATERIALS

Banding and Housing are manufactured from mild steel to BS 1449 part 1 1983 and zinc plated.

Stainless Steel Banding and Housing are manufactured from Grade 304 of BS 1449 part 2.

### TESTING

All testing carried out by independent NAMAS test house.

Tension/Torque testing in accordance with BS 5315:1991 9.3.2.

Hardness Survey in accordance with BS 427.1990  
Corrosion test, 400 hrs Salt Spray in accordance with BS 5466 1977 part 1



**HEAVY DUTY BANDING STRAP**  
- with captive screw.  
Size range 150-900mm Dia.



**QUICK RELEASE TOGGLE FASTENER**  
Size range 150-900mm Dia.



**7mm WIDE BAND**  
All stainless steel to 304 AISI (EN 58E)  
with flip-lock quick assembly screw.

**DISTRIBUTED BY:**



Chesterfield Road, Leicester LE5 5LP England. Tel: 0116 273 9501 · Fax: 0116 273 8373

A  
**HALMA**  
GROUP  
COMPANY